

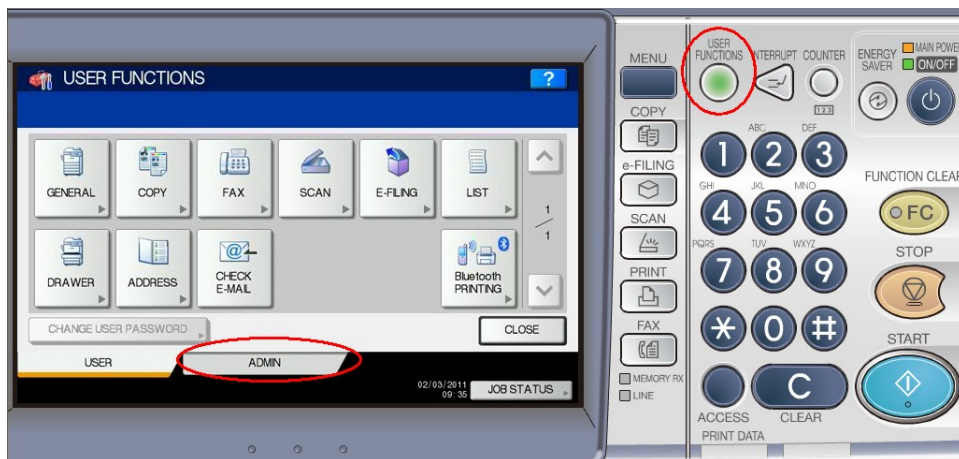
How to change the IP addresses on Toshiba MFP

This document uses the e-STUDIO™4540c for an example. The screens closely match other e-STUDIO™ machines. A basic working knowledge of the TCP/IP v4 Addressing standards is required.

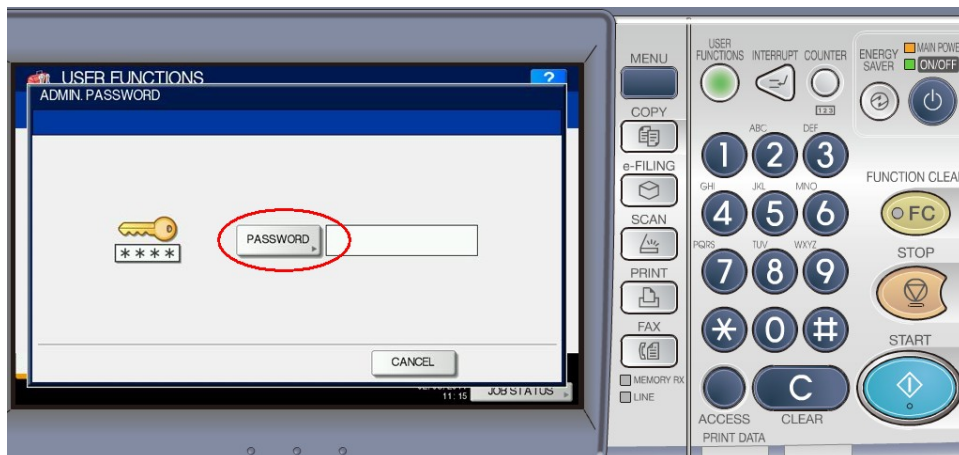
Step 1; you should be at the main screen, you may need to press the yellow FC button once or twice.



Step 2; select the user functions button. Then Select the Admin Tab on the Screen..



Step 3; Enter the password on the following Screen. Default Password is 123456



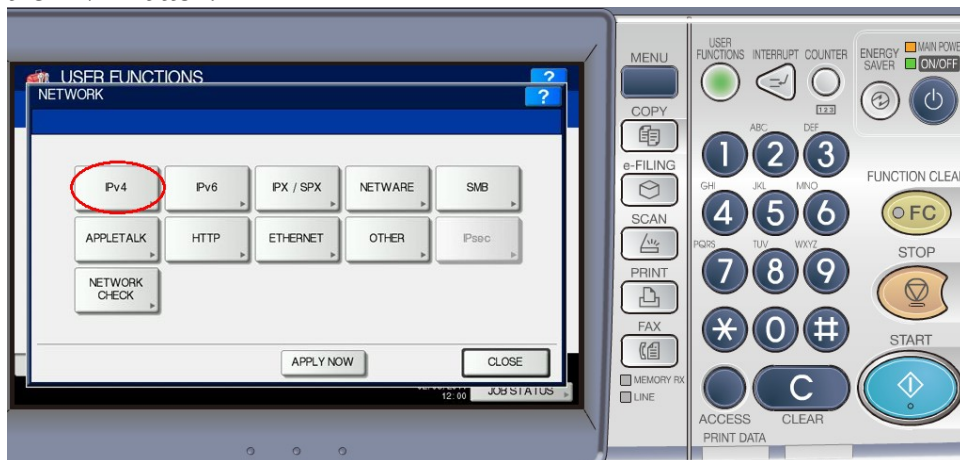
Enter the password with either number keys.



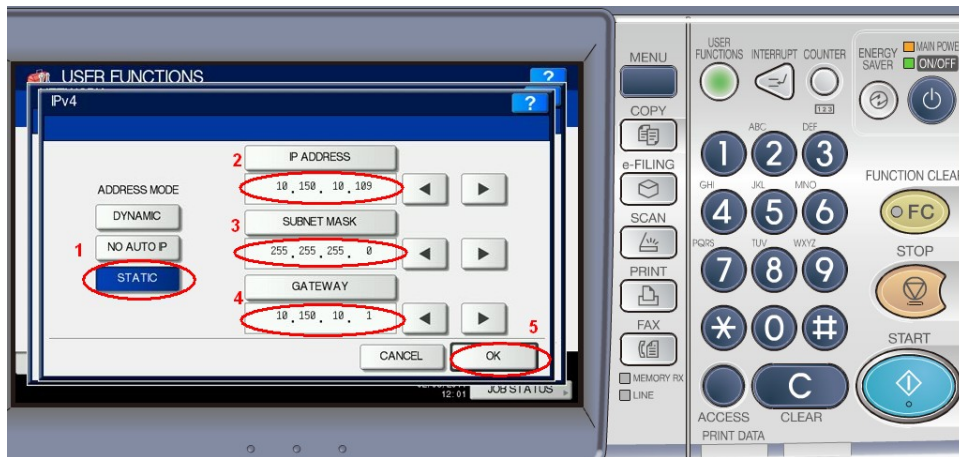
Step 4; Select the Network Button.



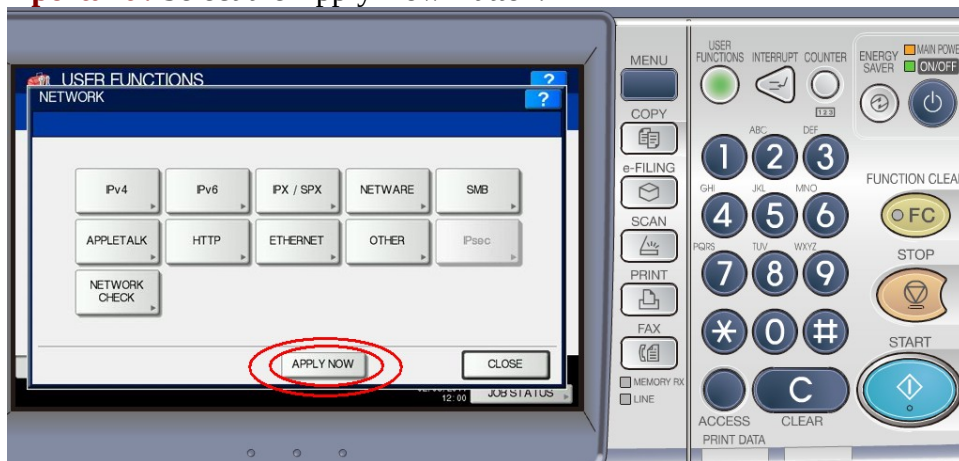
Step 5; Select the IPv4 Button.



Step 6; Enter the IP Address. ¹Select the Static Button, ²Enter the IP Address, ³Enter the Subnet Mask, ⁴Enter the Gateway. (You should get these Values from your IT Department) ⁵Select the OK Button.



Step 7; **Very Important!** Select the Apply Now Button.



Wait a few minutes for the Toshiba Machine to make the changes and initialize the network.

To test, Open the command Prompt on your Computer and Ping the IP Address.

These instructions are copyright to Toshiba Business Solutions© 2017 written by Thomas W. Stephens

```
C:\>Administrator: C:\Windows\System32\cmd.exe
C:\>Ping 192.168.1.1 Type your MFP's IP address here.
Pinging 192.168.1.1 with 32 bytes of data:
Reply from 192.168.1.1: bytes=32 time=2ms TTL=64
Reply from 192.168.1.1: bytes=32 time=1ms TTL=64
Reply from 192.168.1.1: bytes=32 time=1ms TTL=64
Reply from 192.168.1.1: bytes=32 time=1ms TTL=64
Ping statistics for 192.168.1.1:
    Packets: Sent = 4, Received = 4, Lost = 0 (0% loss),
    Approximate round trip times in milli-seconds:
        Minimum = 1ms, Maximum = 2ms, Average = 1ms
C:\>
```