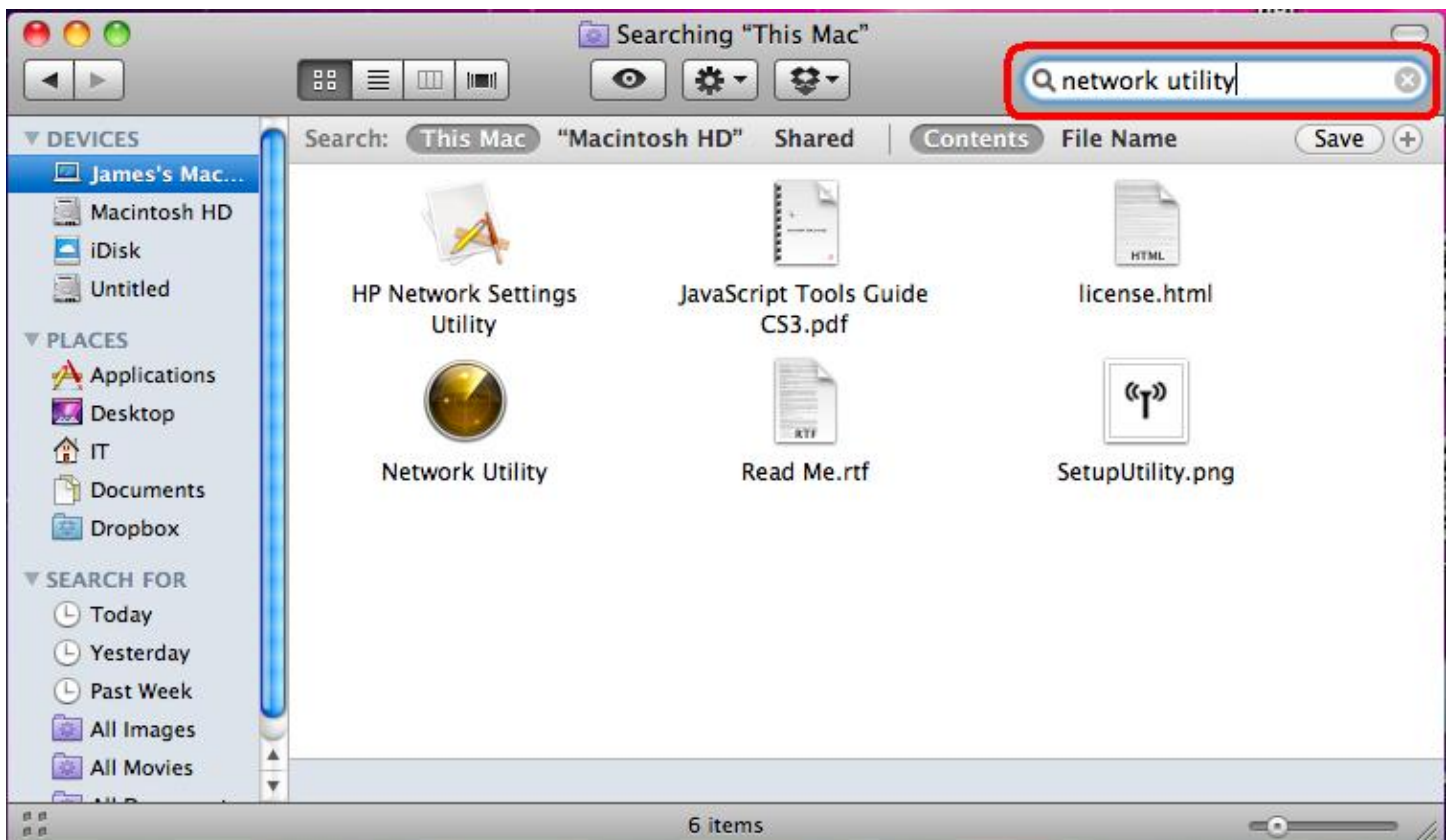


How to Ping the Copier from a MAC

On the application bar (usually at the bottom of the screen), choose Finder:



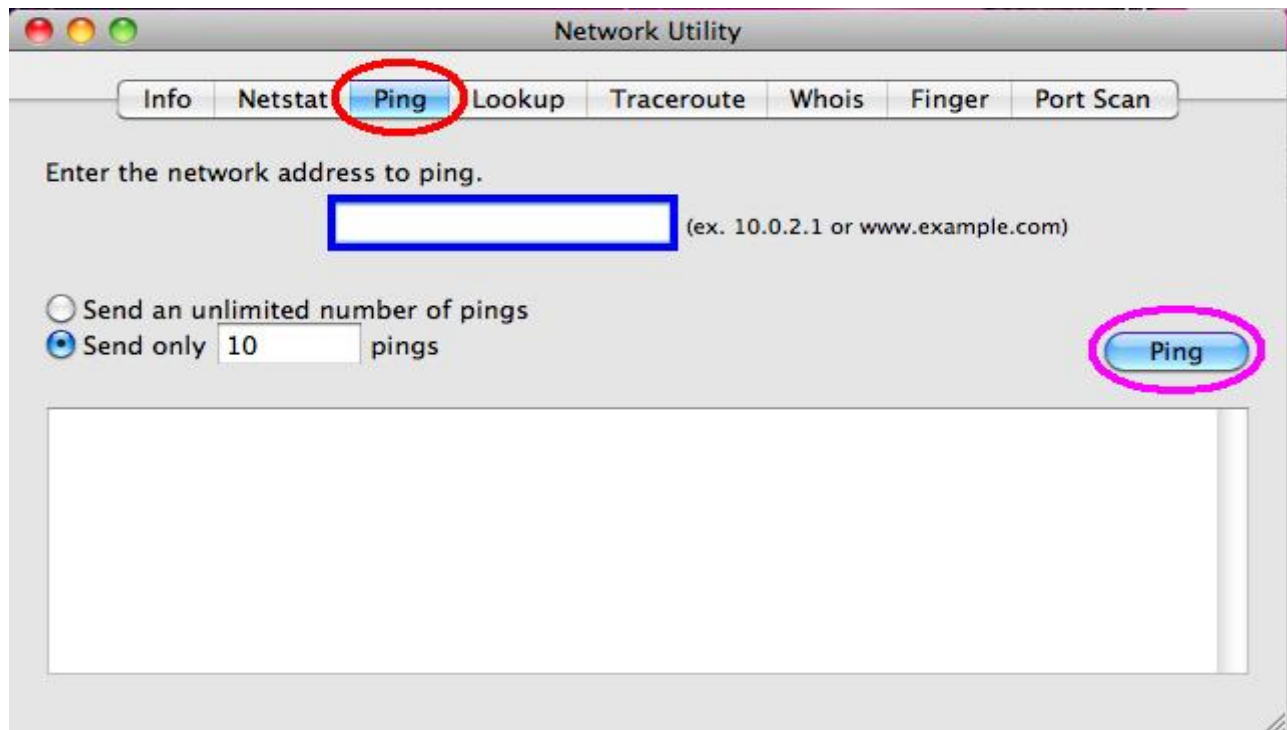
When the Finder screen pops up, type in **network utility** in the search bar:



Click on the **Network Utility** button:



In this menu, choose the **Ping** tab. In the blue box, type the IP Address of the copier. Click on the **ping** button to start:



You will see something similar to the following. If all of the packets were received, then the machine is available on the network:

```
--- 192.168.1.1 ping statistics ---  
10 packets transmitted, 10 packets received, 0.0% packet loss  
round-trip min/avg/max/stddev = 1.806/2.880/4.728/0.986 ms
```