

How to Download and Add Printer on MAC

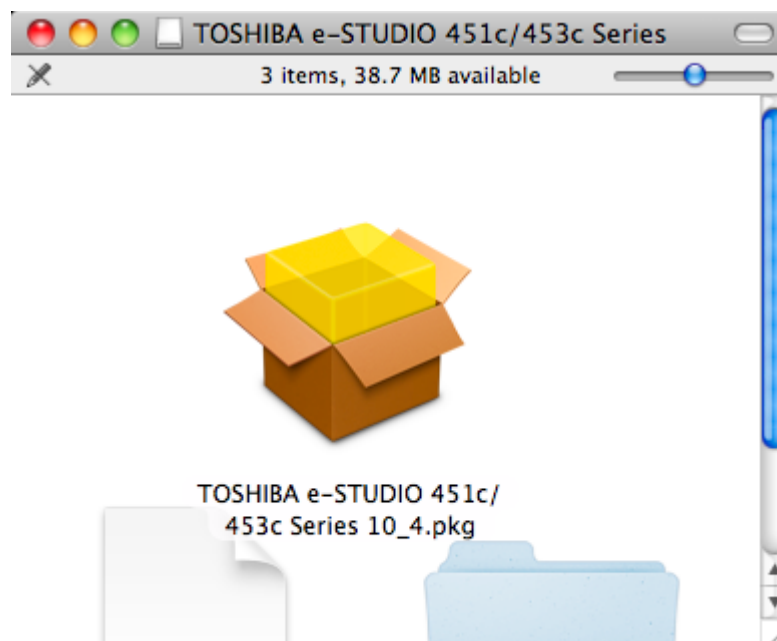
Once you have downloaded the correct print driver from business.toshiba.com, you will need to double click on the .gz file on the desktop:



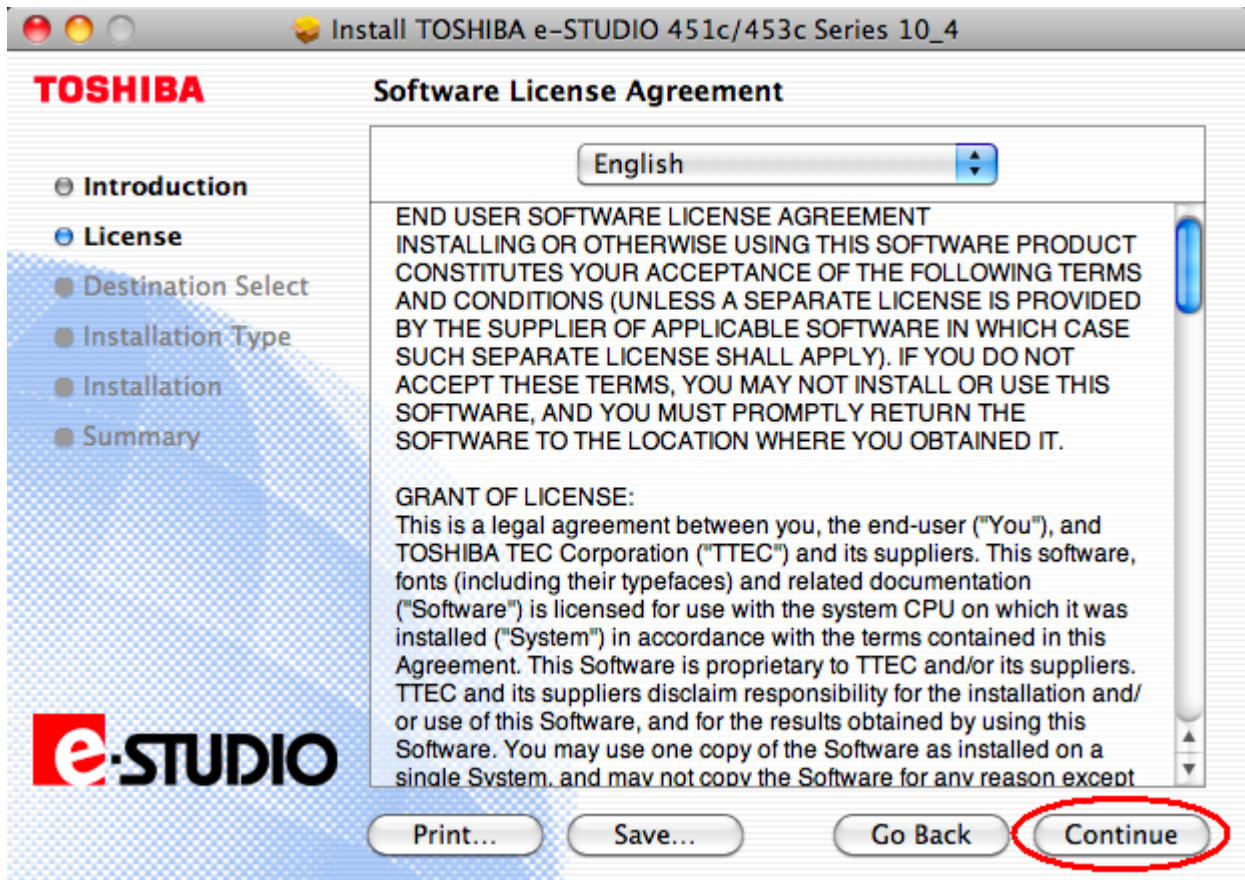
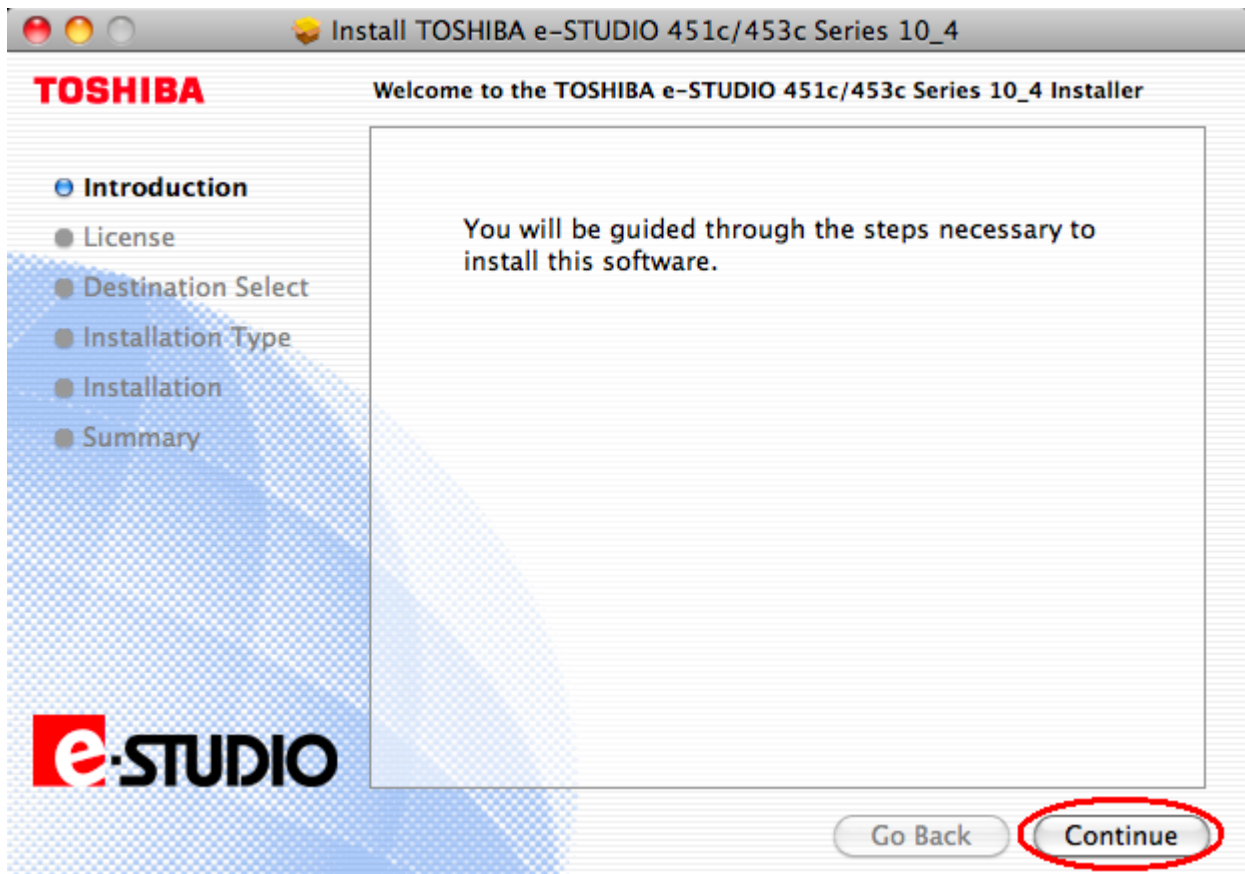
Another file will appear, usually next to it. Double click on the .dmg file



You will see a box pop up. Double click to start the installation



You will see the following screen. Follow the prompts on the screen:



To continue installing the software you must agree to the terms of the software license agreement.

Click Agree to continue or click Disagree to cancel the installation and quit the Installer.

Read License

Disagree

Agree

Install TOSHIBA e-STUDIO 451c/453c Series 10_4

TOSHIBA Standard Install on "Macintosh HD"

- Introduction
- License
- Destination Select
- **Installation Type**
- Installation
- Summary

This will take 963 KB of space on your computer.

Click Install to perform a standard installation of this software on the disk "Macintosh HD".

Change Install Location...

Go Back **Install**

e-STUDIO

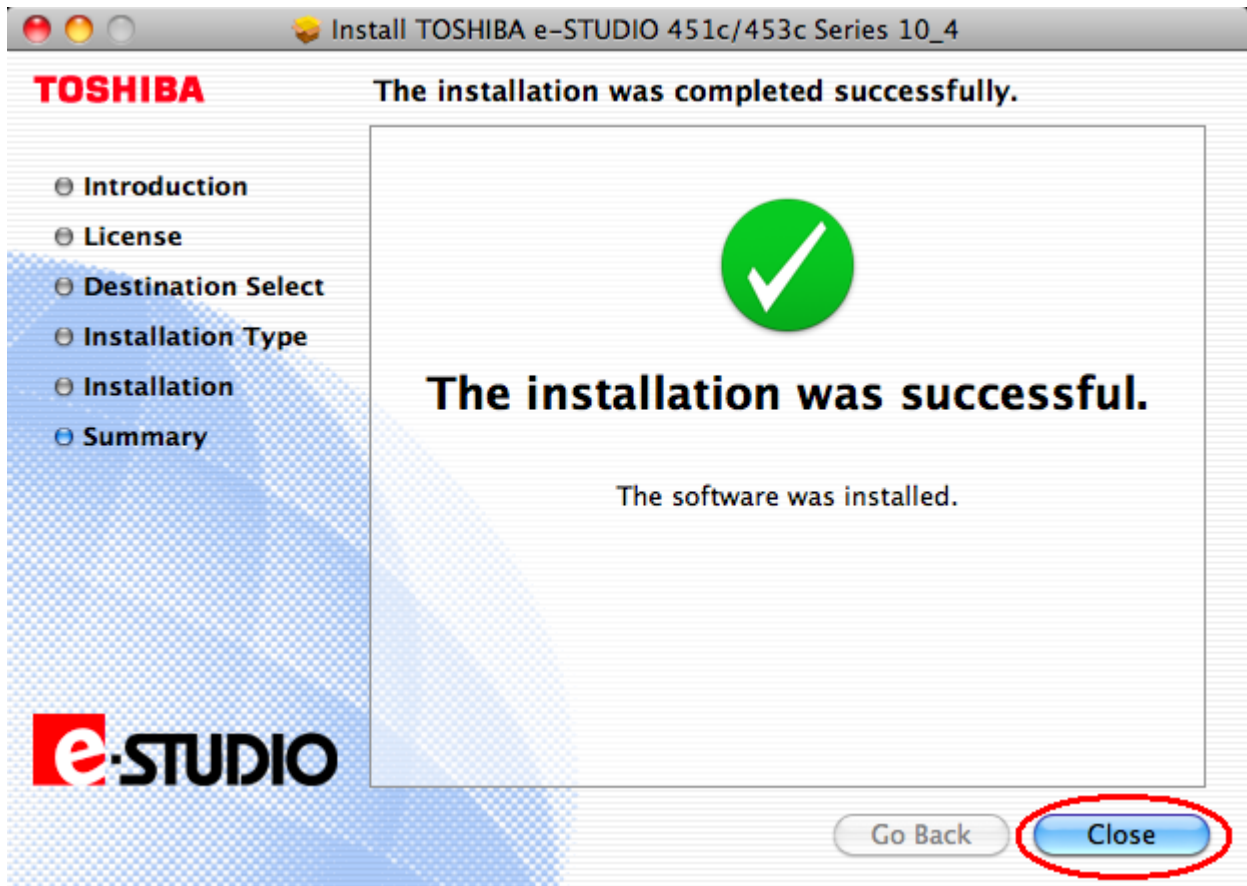
Type your password to allow Installer to make changes.

Name: Bert

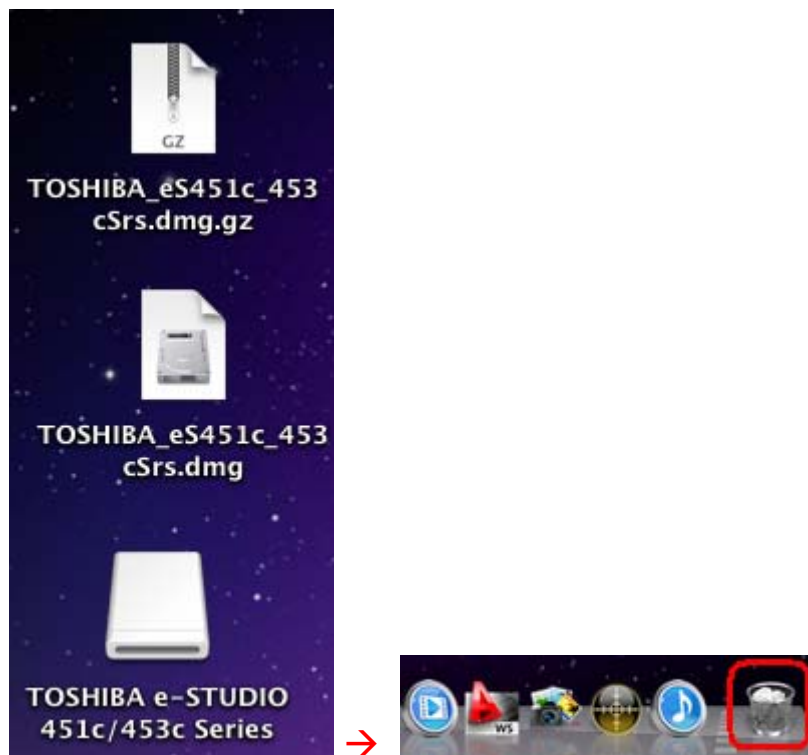
Password:

Details

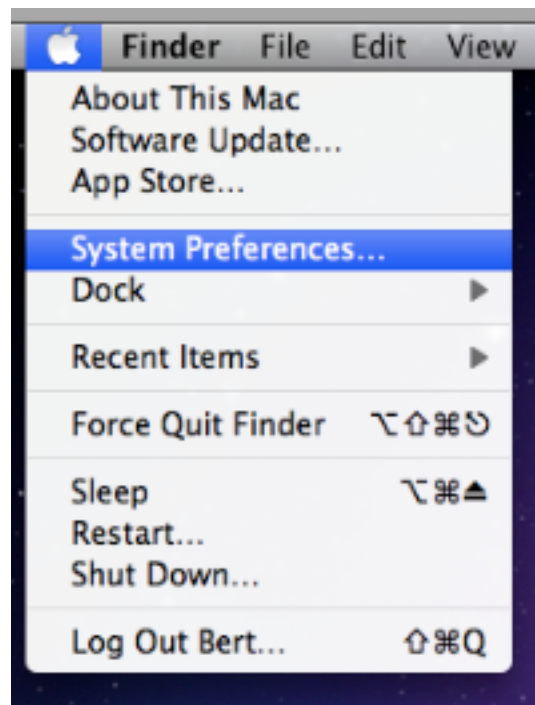
Cancel **OK**



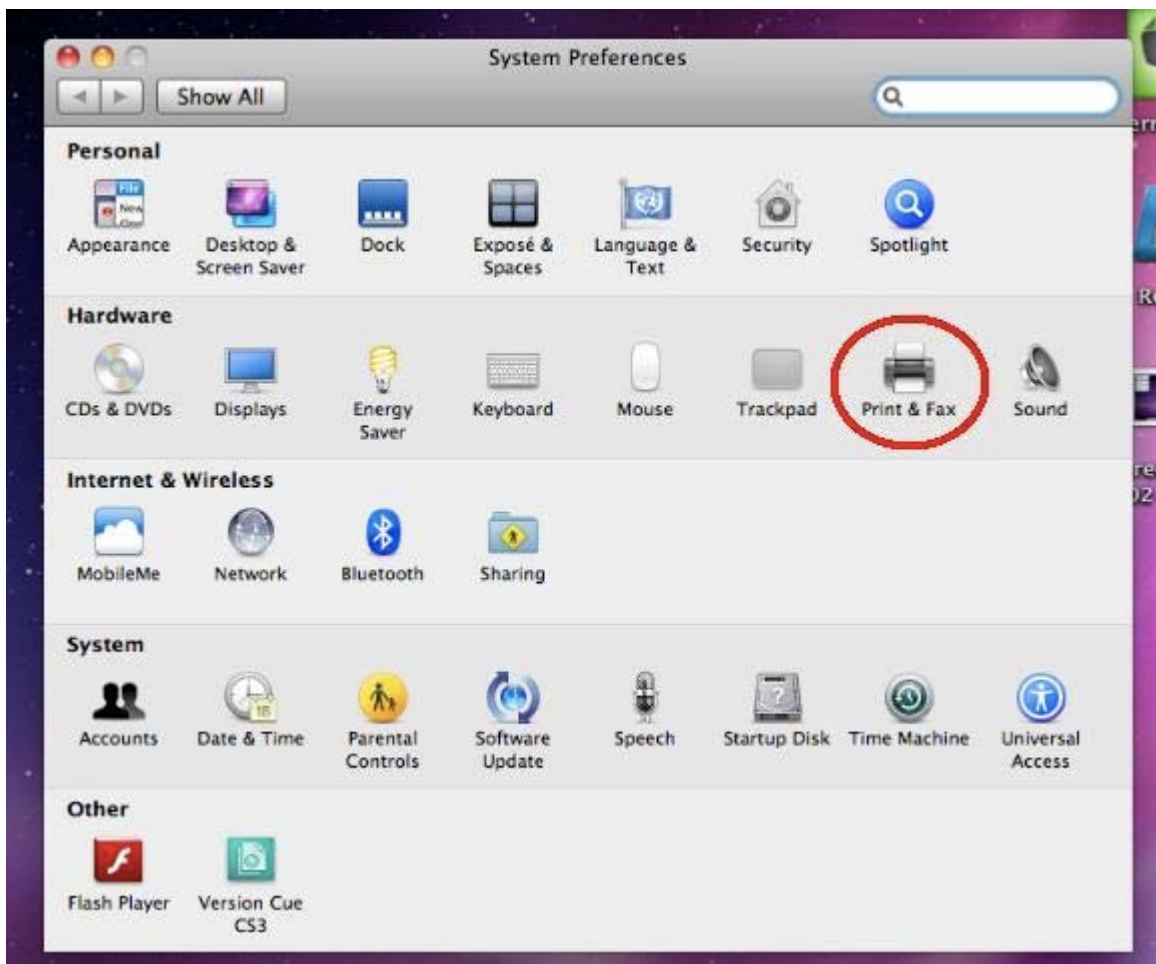
Once you have finished the installation of the print driver, you will see the 3 files associated with the driver. Drag these to the trash bin to delete them off the desktop:



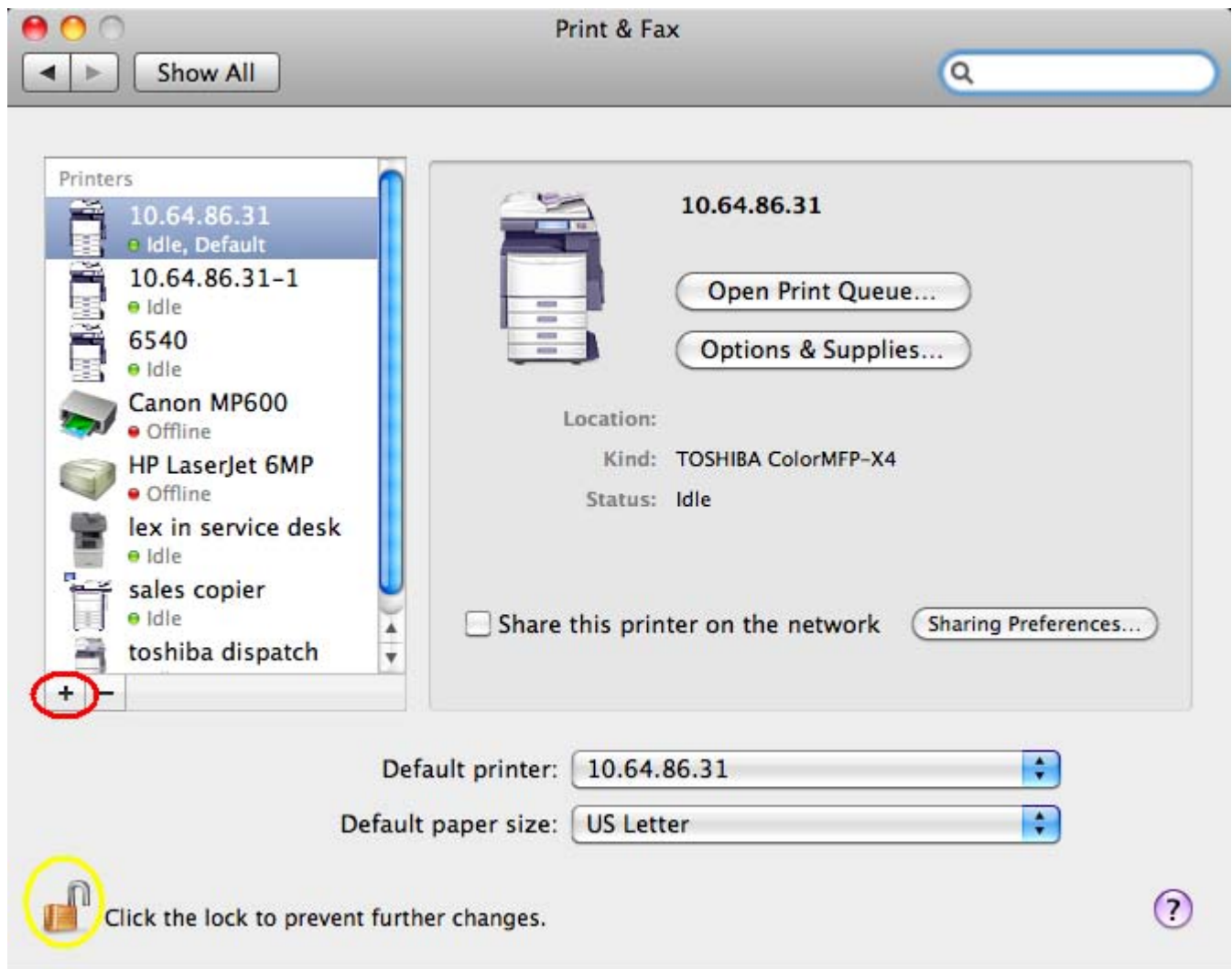
Now we can install the printer. Go to the Apple and choose System Preferences:



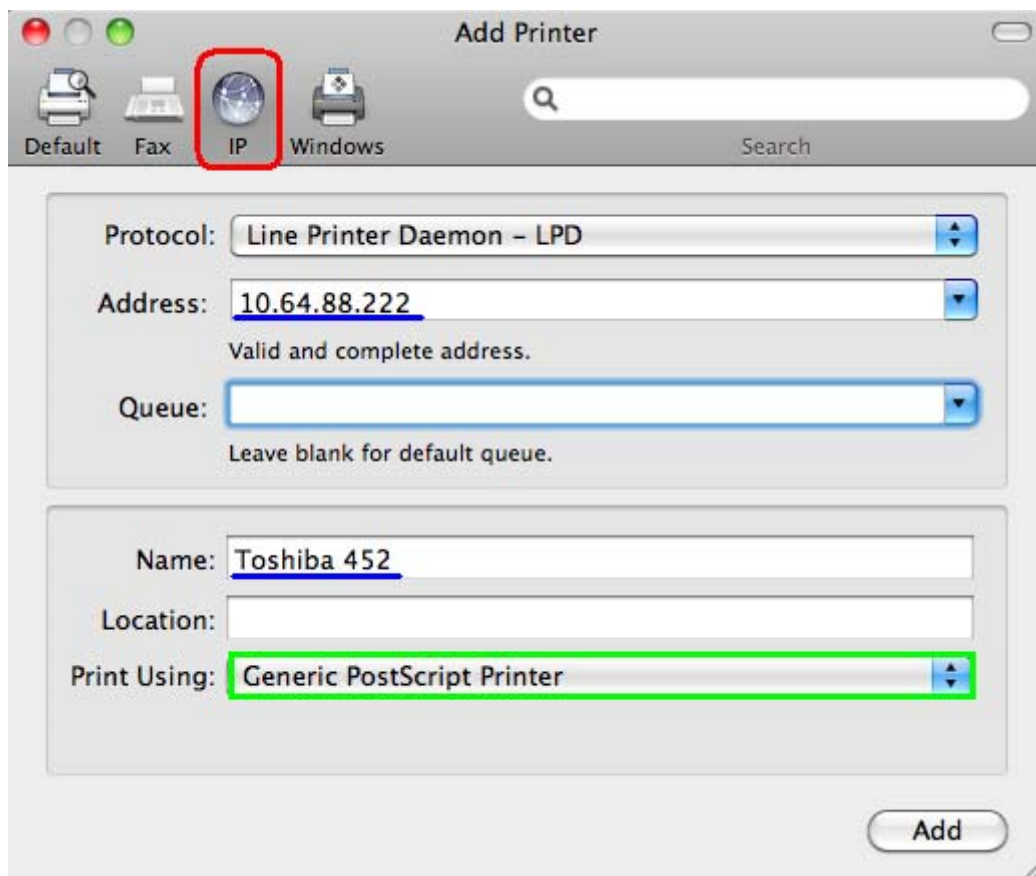
Click on Print & Fax



You will see the following screen. Make sure at the bottom left corner that the lock is unlocked. This is important. It must be unlocked to make any changes to the printers. Once you confirm it is unlocked, click on the plus button (to add a printer):



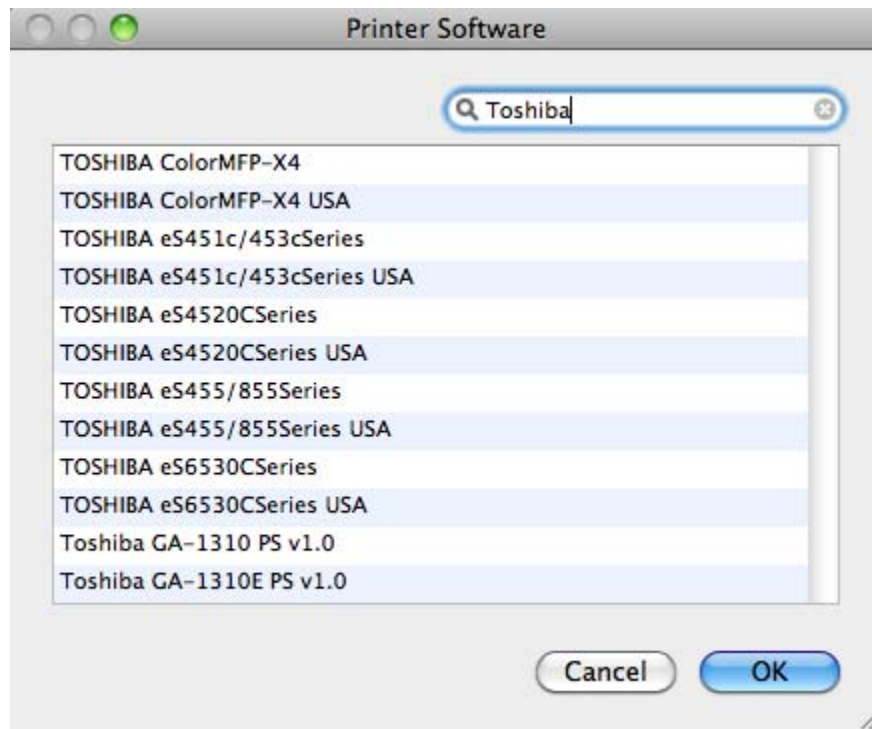
This is the add printer dialog box. Make sure you choose IP at the top. Input the IP Address of the copier. Then, under the Name, delete the IP Address and type in the name of the printer. (ex. Toshiba 452) The print driver should automatically pop up under Printer Using.



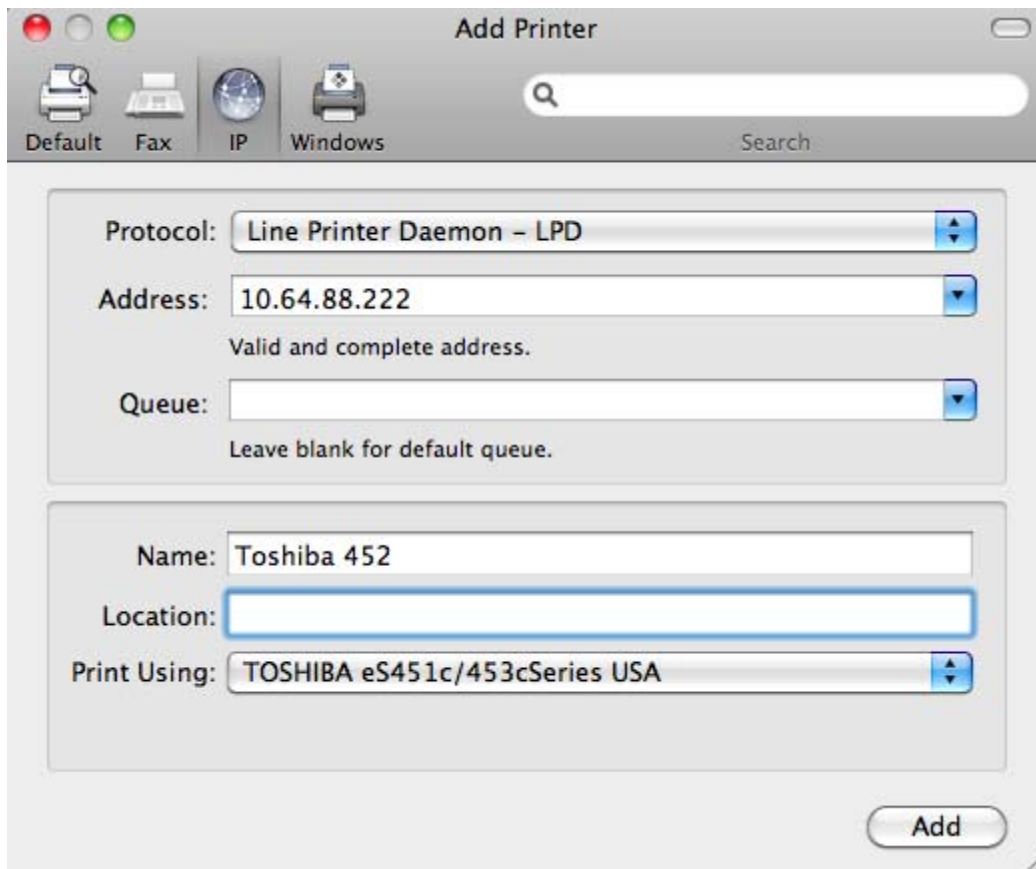
In the above example, it did not give me the driver automatically. We would need to search for it. If this happens, follow these instructions. Click on the Print Using drop down and Select Printer Software...:

- Auto Select
- ✓ Generic PostScript Printer
- Generic PCL Laser Printer
- Select Printer Software...
- Other...

You will see this box. In the search, type in **Toshiba**.

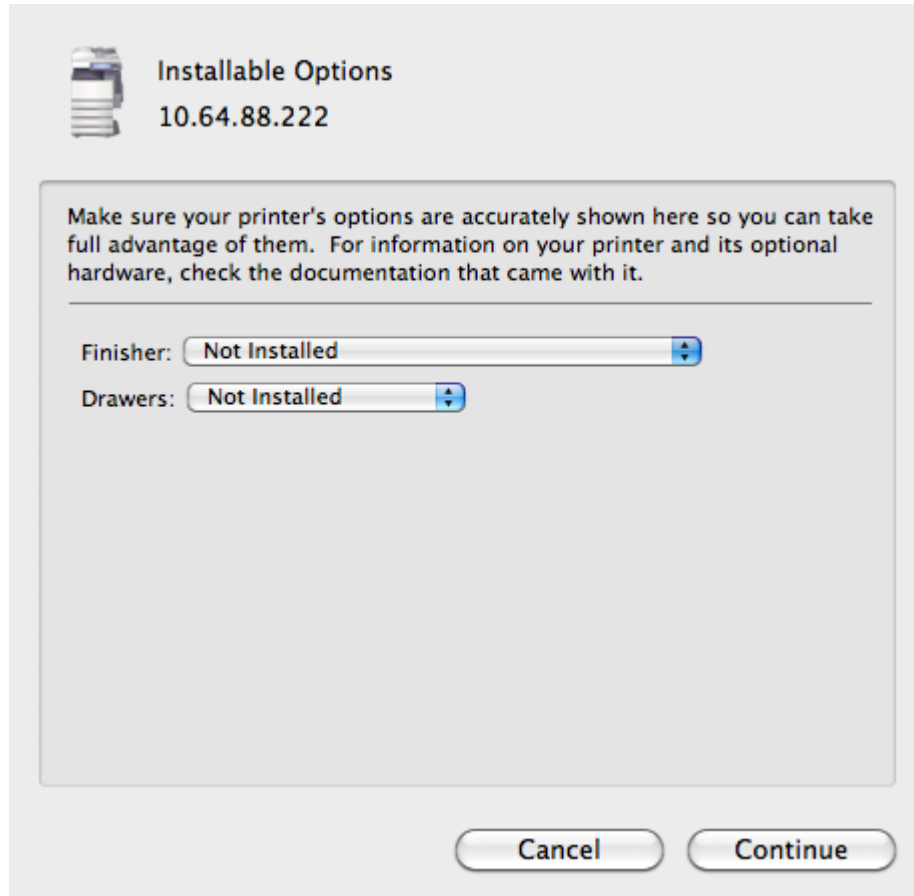


Select the printer driver from the list and click OK.



Click **ADD** to continue with the printer installation.

You must specify the accessories of the machine. Click on the drop down for each one and specify.



Finisher

- ✓ Not Installed
- Single Position Stapler
- Multi-Position Stapler
- Multi-Position Stapler and Hole Punch

Drawers

- ✓ Not Installed
- Drawer 3
- Drawer 3 and 4
- LCF

Click continue to finish the installation.

You have successfully added the printer to the MAC.