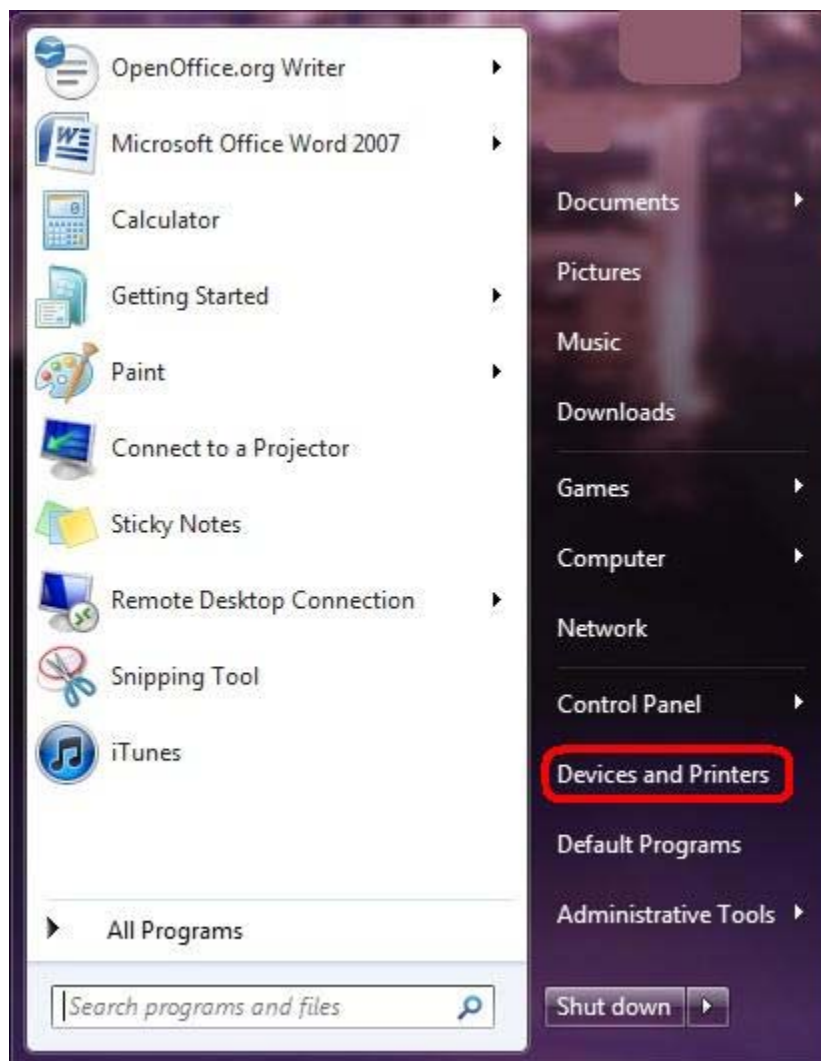
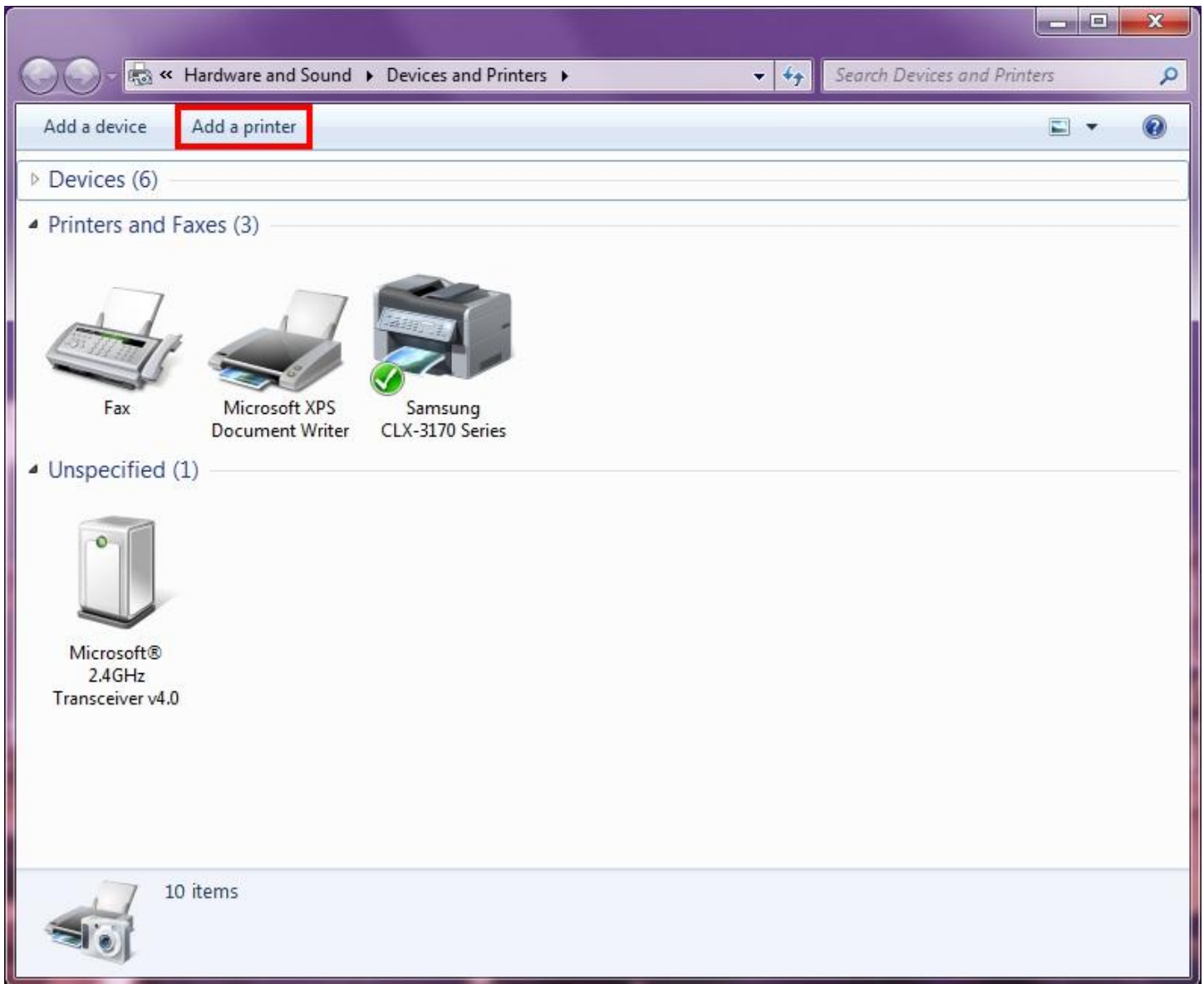


How to Add Printer on Windows 7

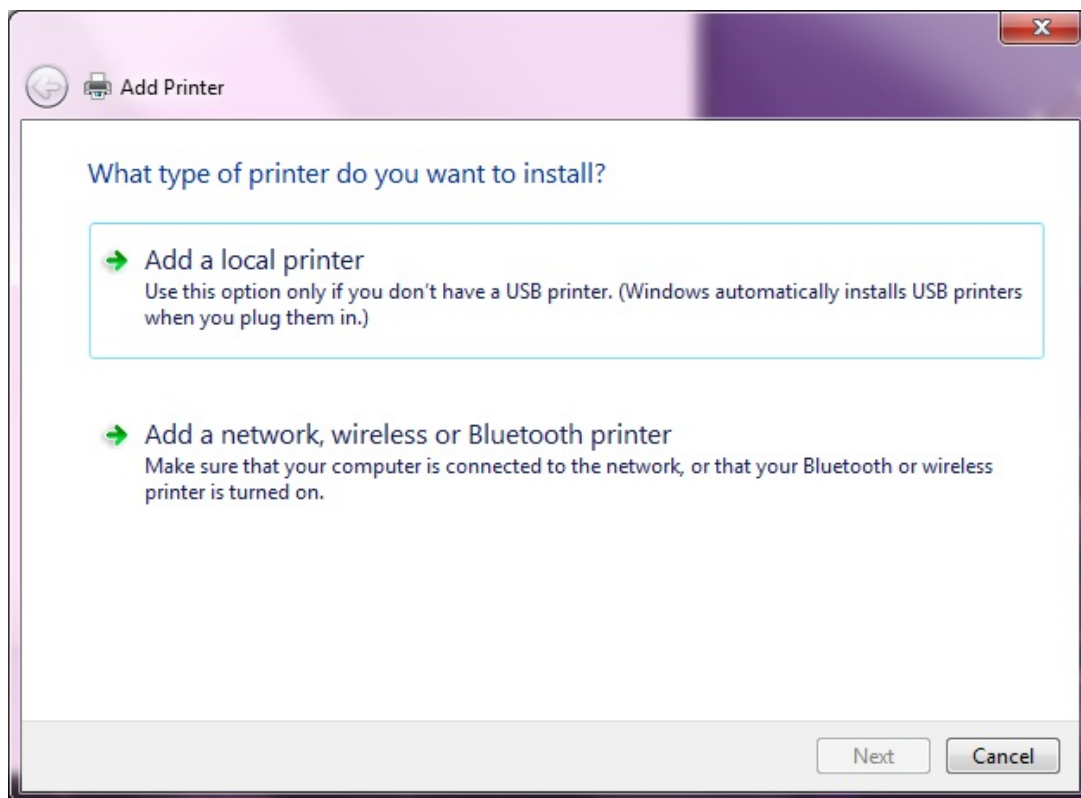
After downloading the print driver, follow these steps to add the printer. Click on the Start button and choose Devices & Printers.



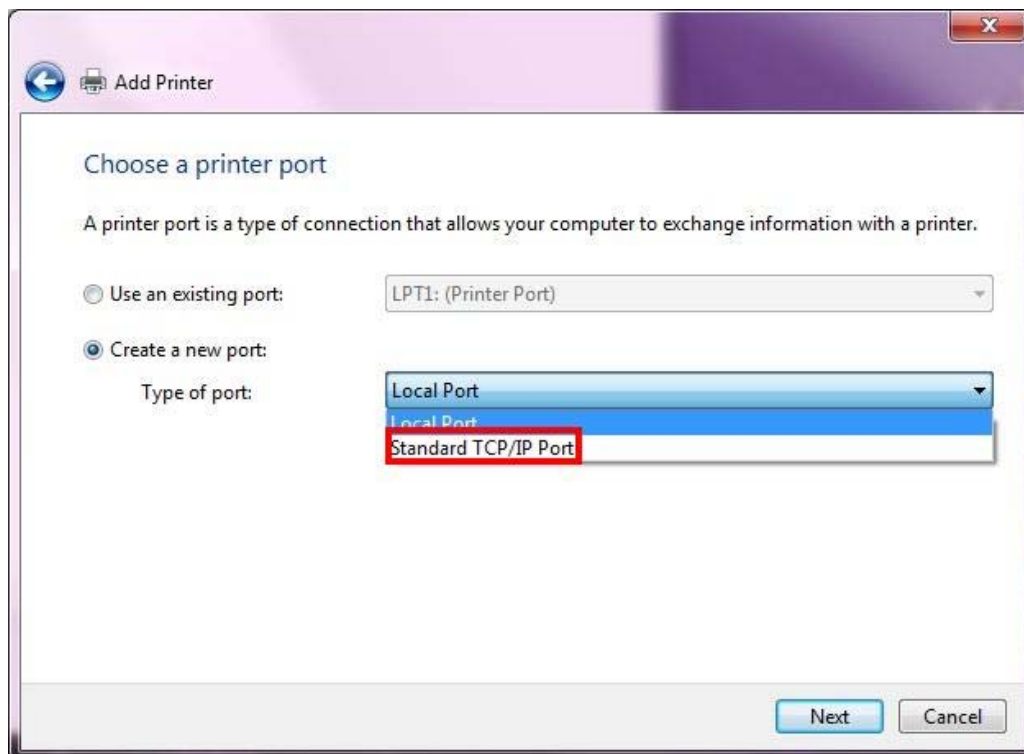
Click on the Add Printer button at the top of the screen.



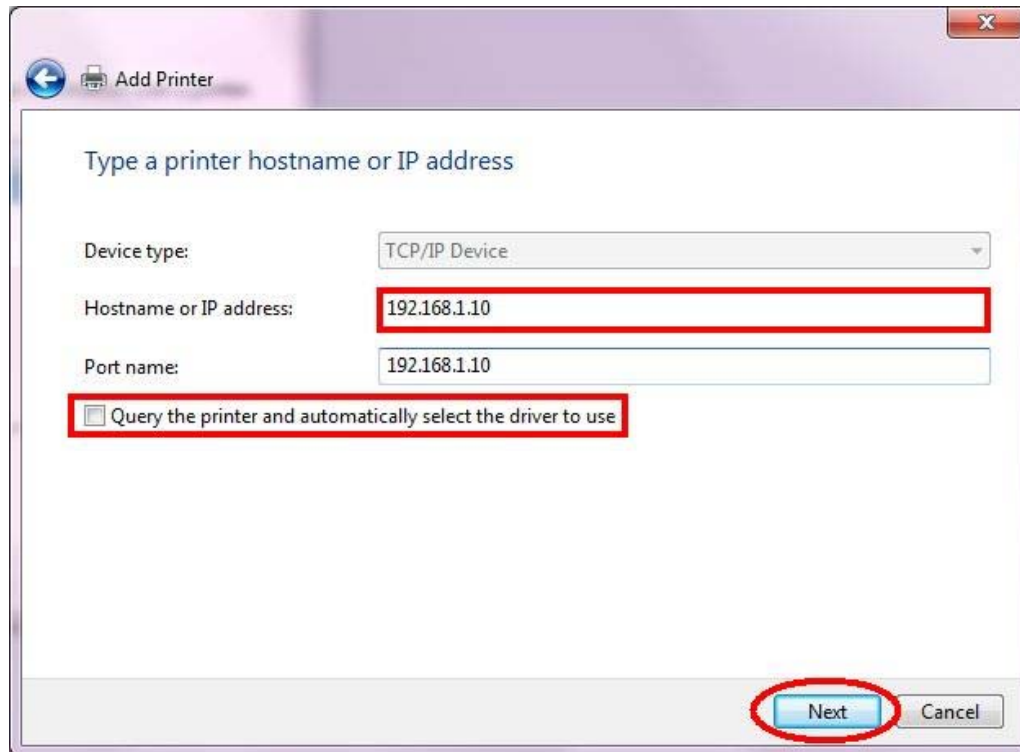
Click on Add a Local Printer.



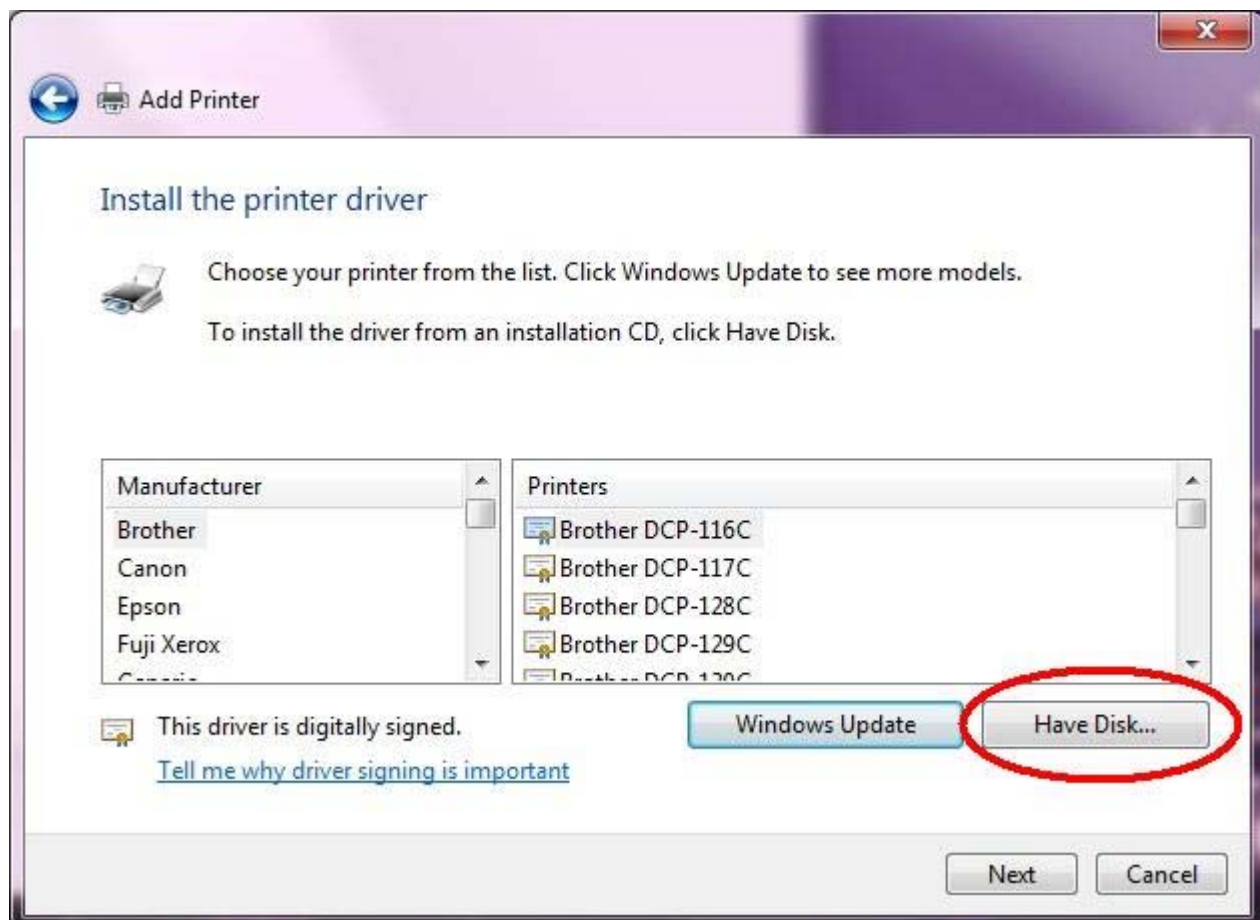
Click on Create New Port and choose Standard TCP/IP Port and click Next.



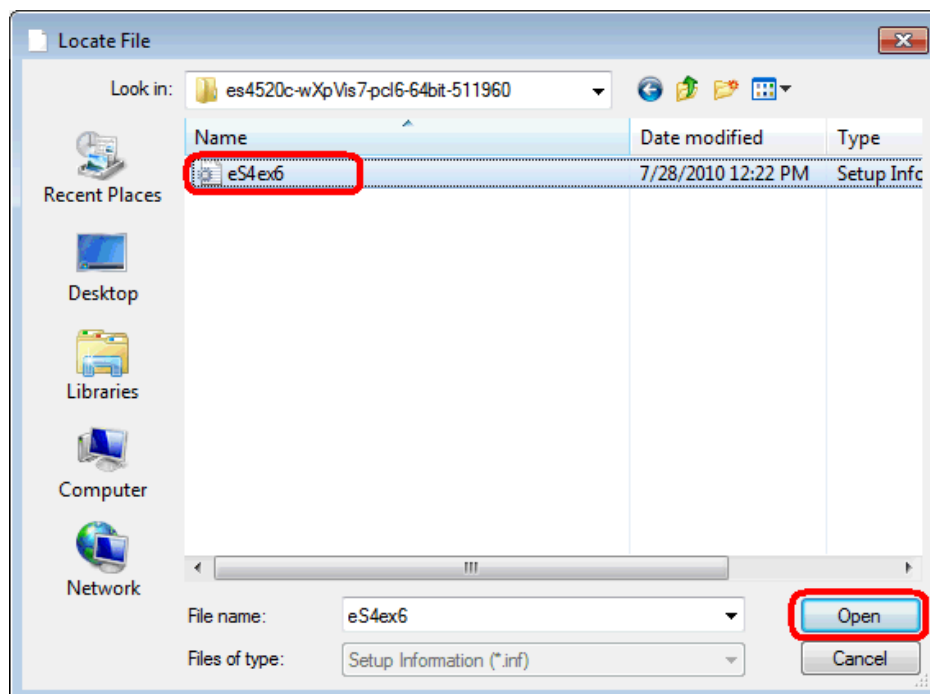
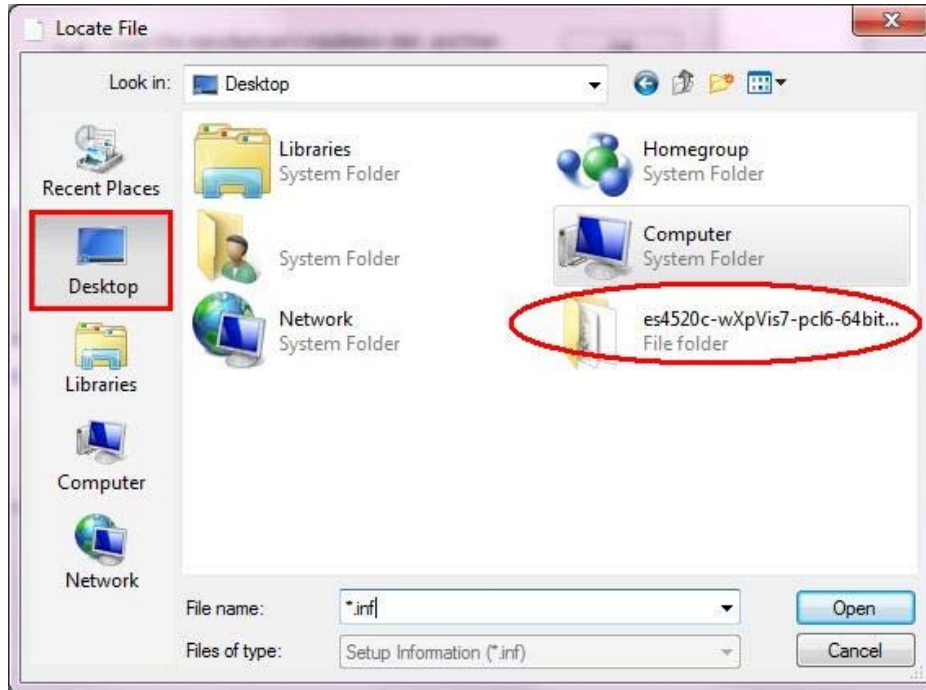
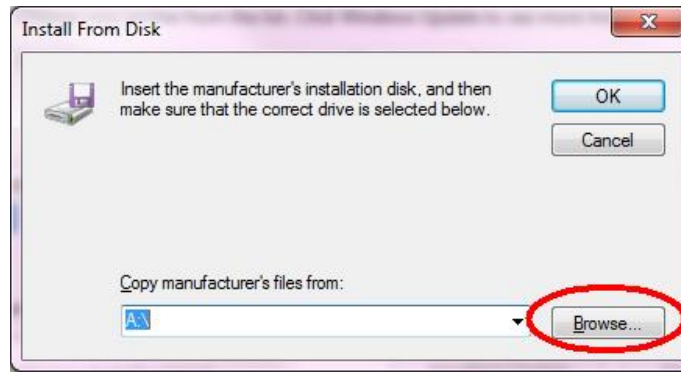
Type in the IP Address into the Host Name/IP address line. **Do not** change the Port Name. Also, **uncheck** the Query for print driver. We want to choose the driver.

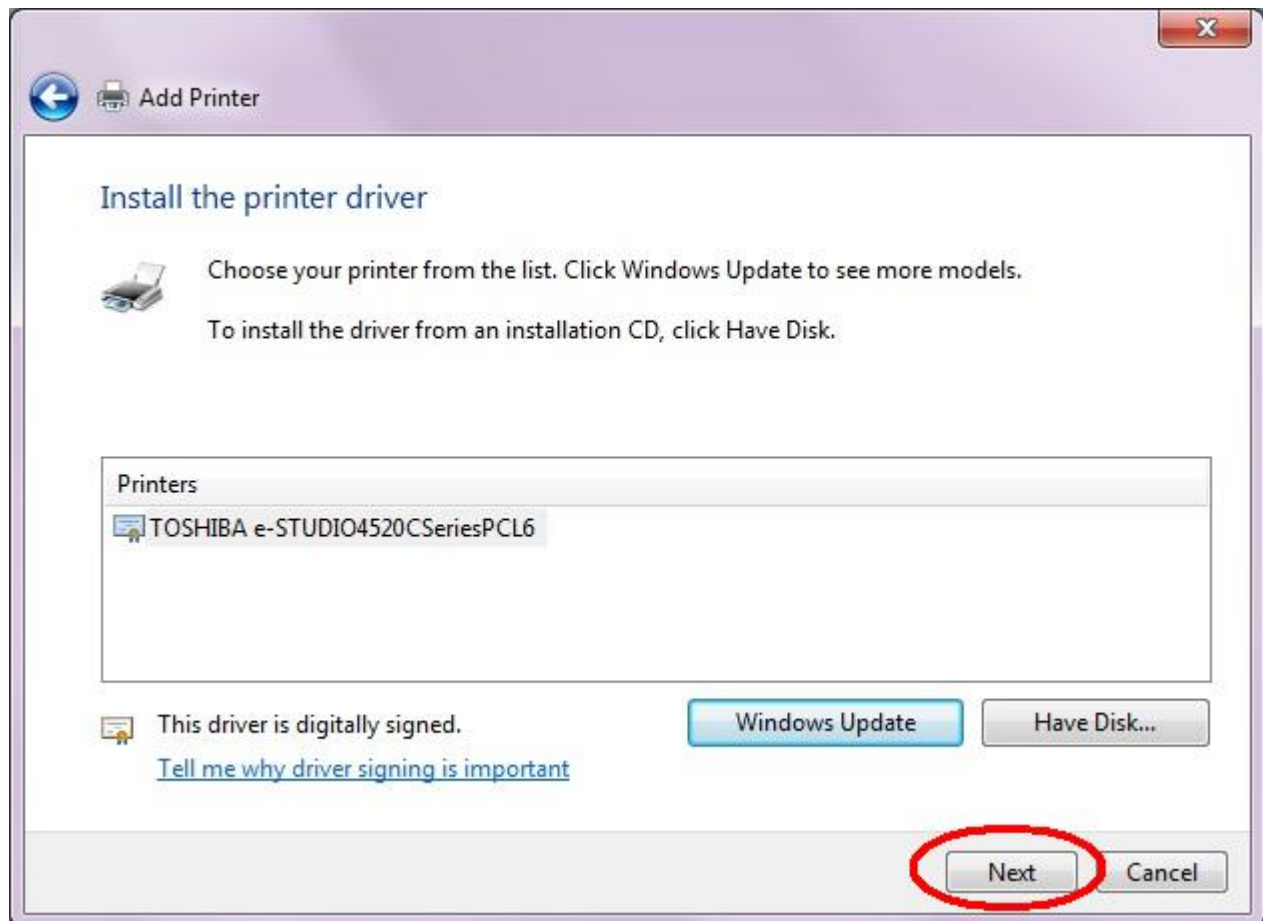
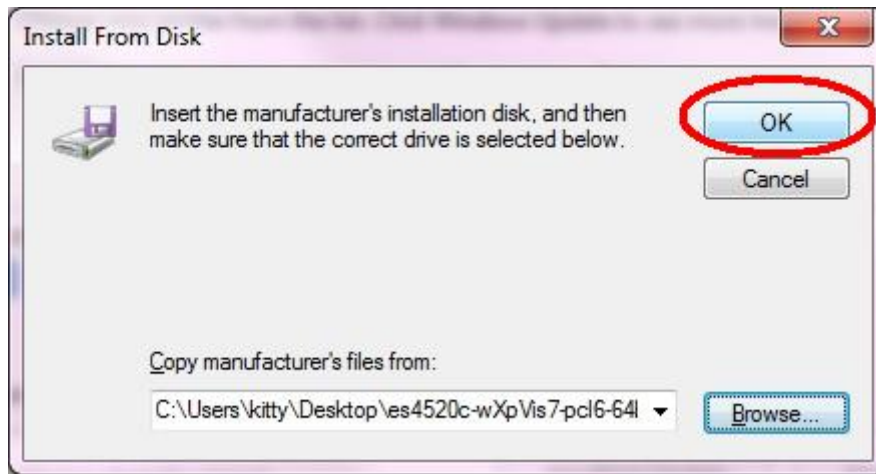


Now, we will choose the Print Driver. We are going to click on HAVE DISK to do this.

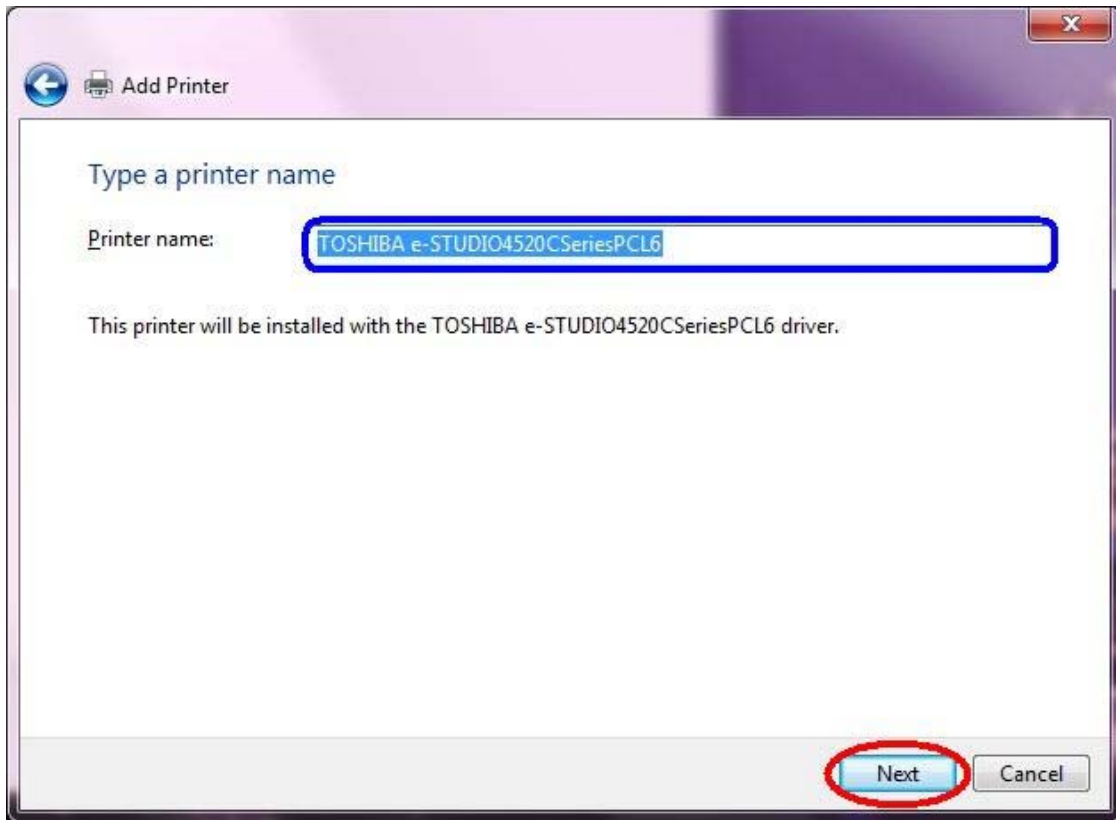


Next, we will click on Browse and look for the extracted print driver:

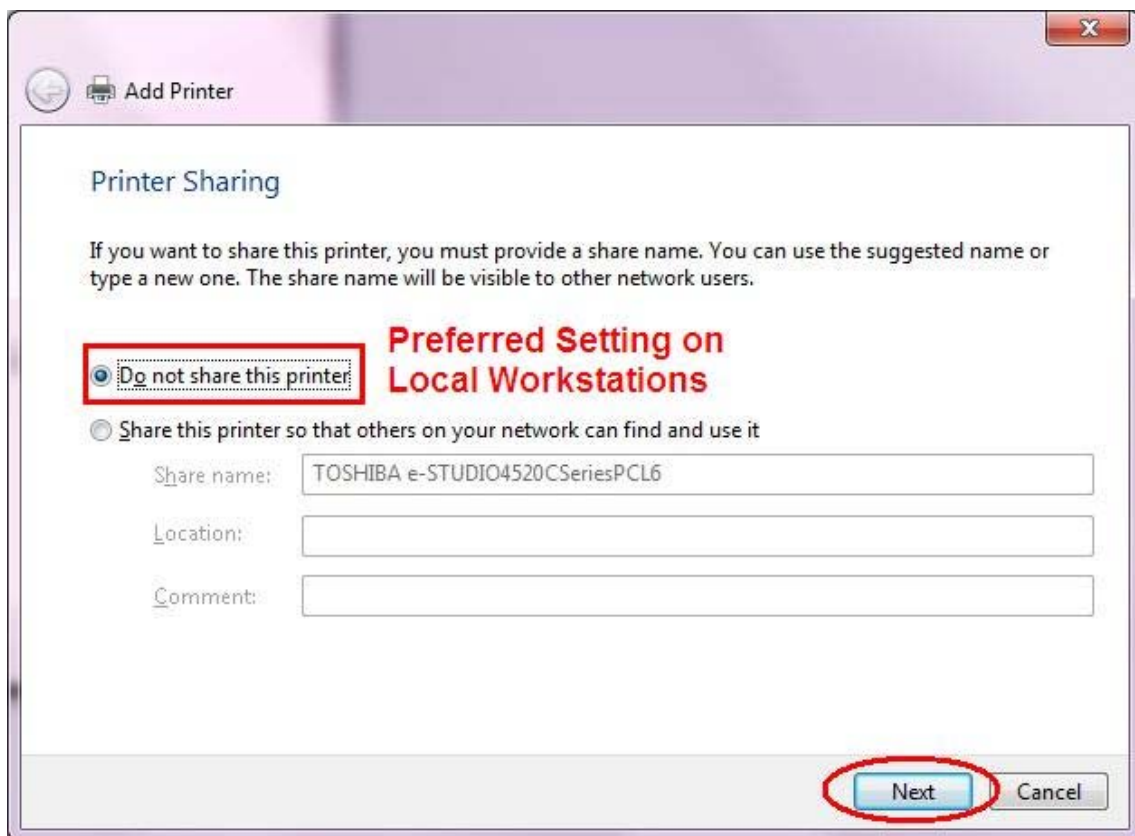




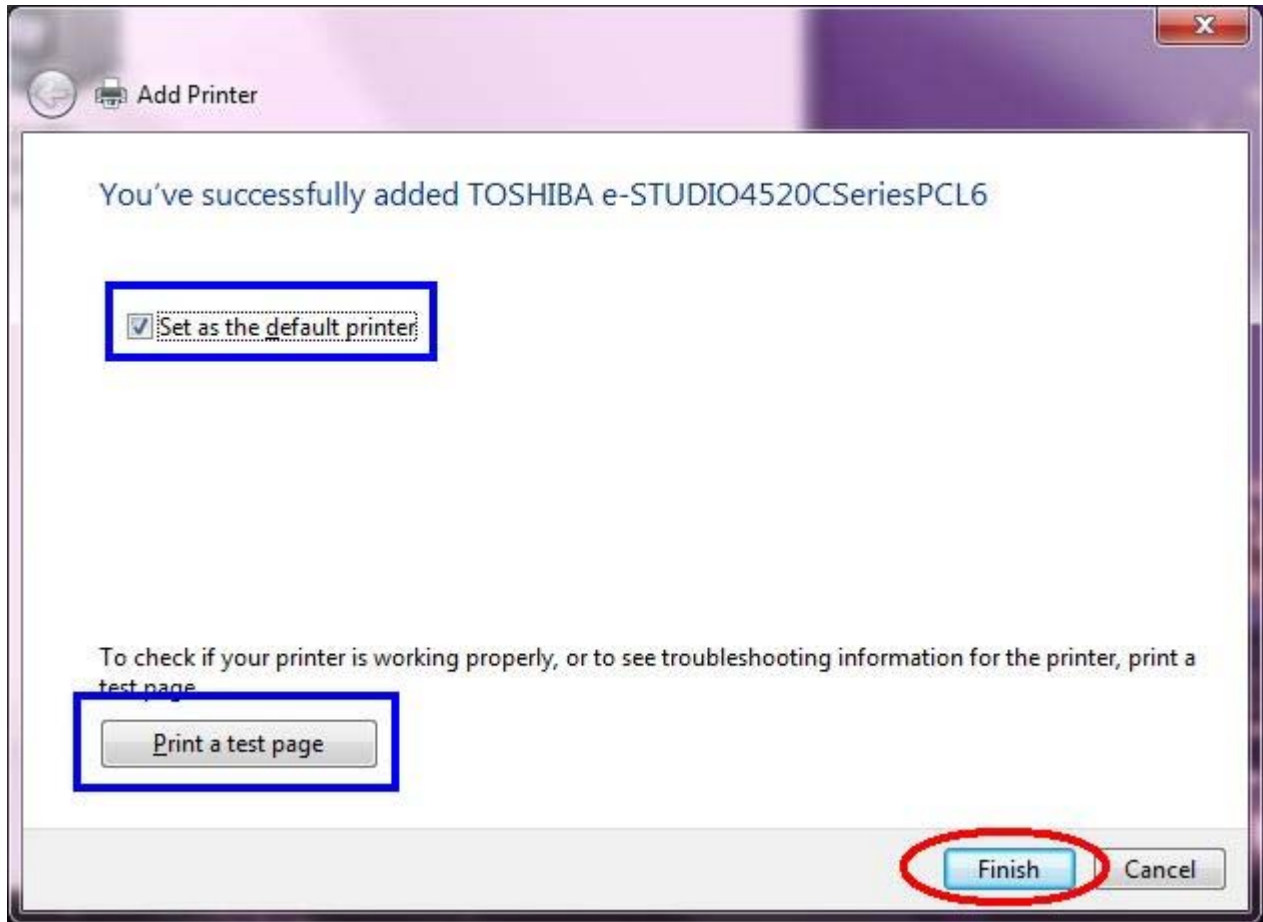
We now have the chance to change the name of the printer from the default name to the customer's preferred name, if desired. Click Next when done.



On local workstations, we always suggest to not share the printer.



We have now finished adding the printer. You have the option to set this printer as a default printer for the user and if you would like to do a test page. Click on Finish when you are done.



You have successfully added the printer to the Windows 7 PC.